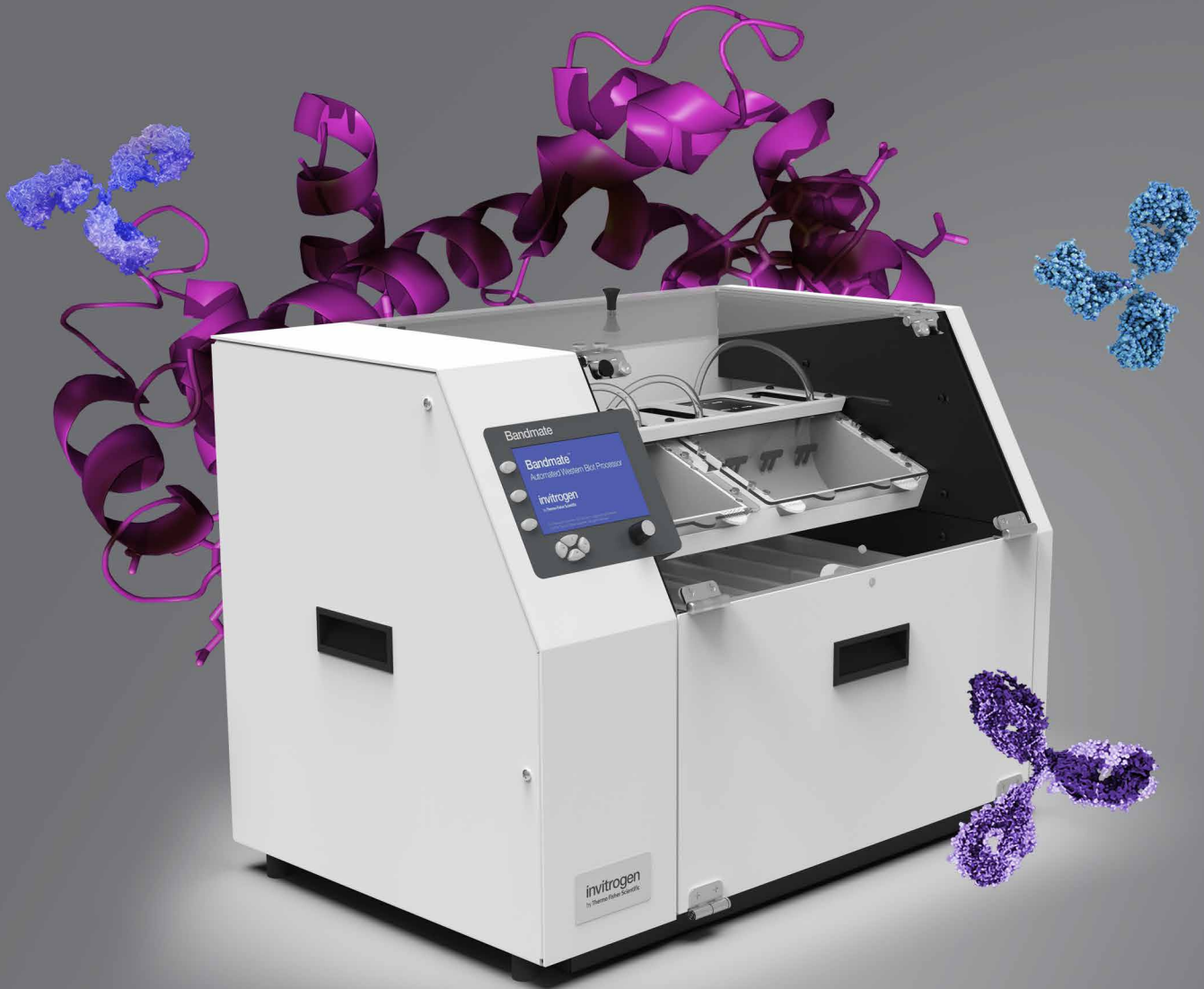


invitrogen



Bandmate Automated Western Blot Processor

Hands-free blot processing using your protocols

ThermoFisher
SCIENTIFIC

Programmable blot rocking system

Free up valuable time

The Invitrogen™ Bandmate™ Automated Western Blot Processor is a programmable blot rocking system that automates the tedious hands-on blocking, washing, and antibody incubation steps of western blot processing. Minimal effort is required to set up the Bandmate device to process up to 2 midi blots or 4 mini blots using your current optimized reagents and protocols, freeing up time for other important tasks.

- ➔ Completely automated antibody incubations and wash steps
- ➔ No specialized reagents required
- ➔ Easy to remove processing and collection trays for quick cleanup
- ➔ Recoverable primary and secondary antibodies



Take a virtual tour at [thermofisher.com/bandmatetour](https://www.thermofisher.com/bandmatetour)

Simple, intuitive programming

Continue to use your currently optimized protocols

Built-in control panel makes it easy to select preprogrammed protocols for convenience, or design protocols specific to the needs of your experiments.

- ➔ **Dispensing volumes**—up to 75 mL (for mini blots), and up to 150 mL (for midi blots); programmable with up to 10 repetitions per step
- ➔ **Rocking speeds**—from 5 to 40 cycles per minute
- ➔ **Incubation times**—from 1 minute to 96 hours for blots that may require incubations overnight or longer
- ➔ **Processing temperatures**—the system can be placed in a 4°C cold room if necessary

← Edit **CUSTOM**

Estimated Run Time: 3:34

Blot size: **MIDI**
Quick Rinse: **NO**

	Reagent	Repeat	Fill Vol. (mL)	Rock Time (hr:min)	Rocks Per Minute	Drain To
Step 1	Pre Fill	---	---	:10	15	Waste
Step 2	Buffer	3X	25	:15	35	Waste
Step 3	Reagent 1	---	---	:30	15	Recover
Step 4	Buffer	3X	25	:15	35	Waste
Step 5	Reagent 2	---	---	:30	15	Recover
Step 6	Buffer	3X	25	:15	35	---
Step 7	End	---	---	---	---	---
Step 8	---	---	---	---	---	---
Step 9	---	---	---	---	---	---

▶

📁



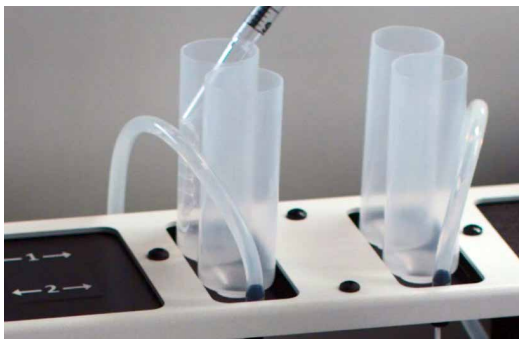
Conserve precious antibodies

Unique sample tray design limits volume requirements

The consistent rocking motion during incubation and wash steps, combined with the unique curved incubation trays, helps minimize the required antibody volumes—as little as 3.5 mL for mini blots and 7.5 mL for midi blots.

Recover antibodies after use

The included funnel trays enable the primary and secondary antibodies to be recovered at the completion of processing for additional use without cross contamination. More than 90% of the starting antibody volume can be collected and recovered for future reuse.



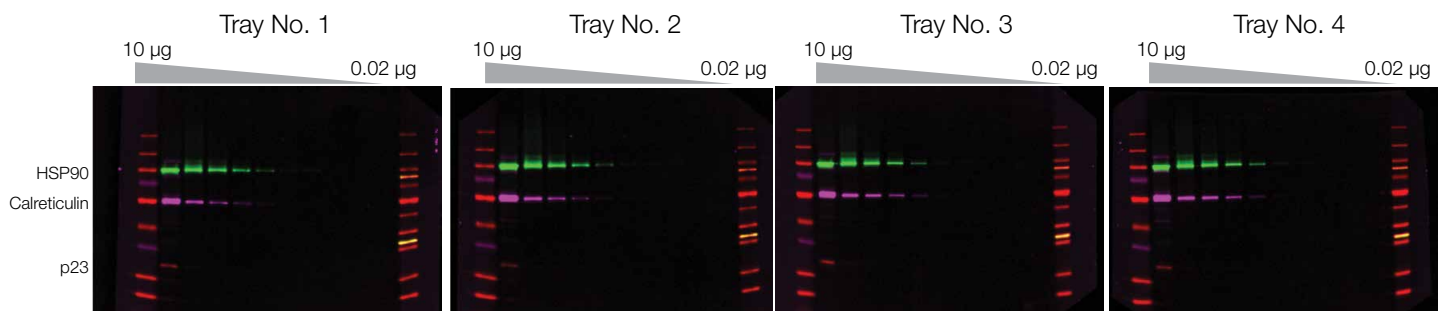
Limit cross contamination

The Bandmate device features an innovative antibody dispensing system where the antibody solutions are not passing through any fixed tubing, minimizing the potential of cross contamination. The primary and secondary antibody solutions are placed in separate reagent tubes with seals on the bottom that are punctured during the antibody incubation step to deliver the antibody directly to the sample trays.

Watch how to operate the Bandmate Automated Western Blot Processor at [thermofisher.com/bandmate](https://www.thermofisher.com/bandmate)

Get more consistency day-to-day and person-to-person

Maintaining the precise timing of block, wash, and antibody incubation steps can be challenging from blot to blot. Because the processing steps of the Bandmate device are programmable, the precision of the steps can be improved compared to manual hands-on western blot processing.



The detection of proteins is consistent from blot to blot when blots are processed with the Bandmate Automated Western Blot Processor.

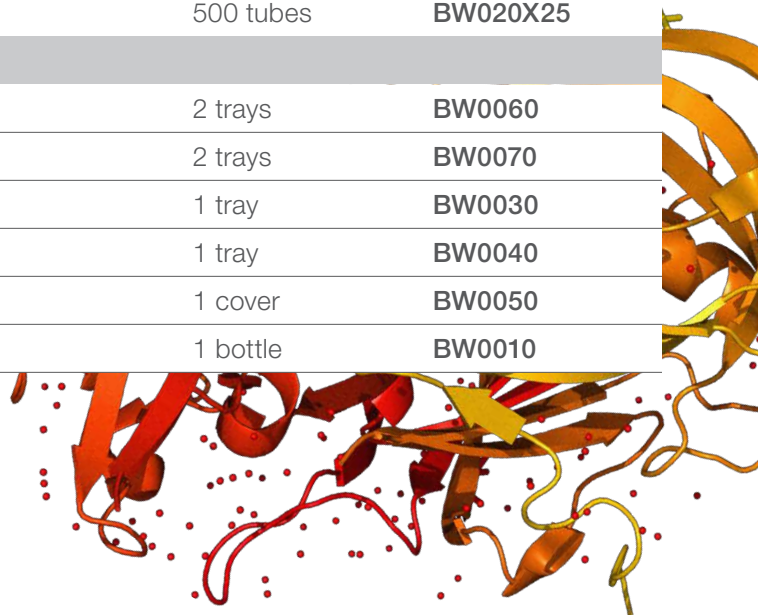
Specifications

Capacity	Up to 4 mini blots or up to 2 midi blots
Rocks per minute	5–40 rpm
Maximum washes per step	10
Minimum reagent per blot	3.5 mL (mini blot), 7.5 mL (midi blot)
Maximum number of protocol steps	9
Maximum number of saved protocols	8 (6 custom and 2 default protocols)
Buffer dispensing volume	10–75 mL (mini blots), 10–150 mL (midi blots)
Time range for incubation step	1 min to 96 hours
Operating temperature	4°C–40°C
Dimensions (L x W x H)	61 x 39 x 42 cm (24 x 15.5 x 16.5 in.)
Weight	Approximately 25 kg (55 lbs)

Ordering information

Product	Size	Cat. No.
Bandmate Automated Western Blot Processor	1 system	BW1000
	100 tubes	BW020X5
Bandmate Reagent Tubes	500 tubes	BW020X25
	Included accessories*	
Bandmate Mini Blot Trays	2 trays	BW0060
Bandmate Midi Blot Trays	2 trays	BW0070
Bandmate Waste Tray	1 tray	BW0030
Bandmate Funnel Tray	1 tray	BW0040
Bandmate Blot Tray Cover	1 cover	BW0050
Bandmate 4 L Nalgene Bottle	1 bottle	BW0010

* These accessories are included with every Bandmate Automated Western Blot Processor.



Take a virtual tour or request a demo today at
thermofisher.com/bandmate

ThermoFisher
 SCIENTIFIC