

Live-cell antifade protection

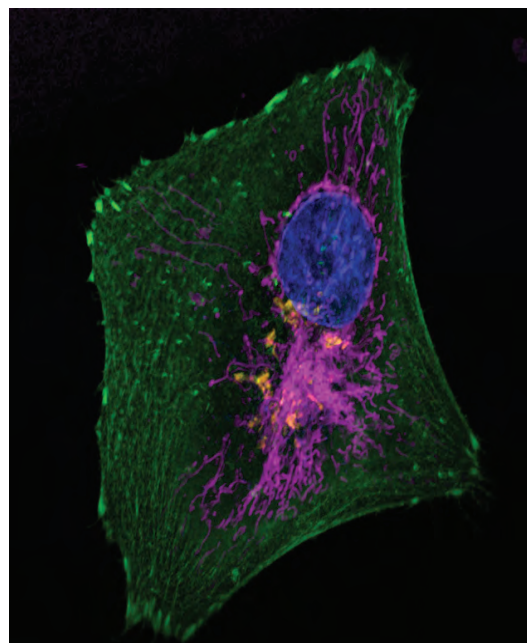
Minimize photobleaching across the spectrum with ProLong Live Antifade Reagent

Invitrogen™ Molecular Probes™ ProLong™ Live Antifade Reagent

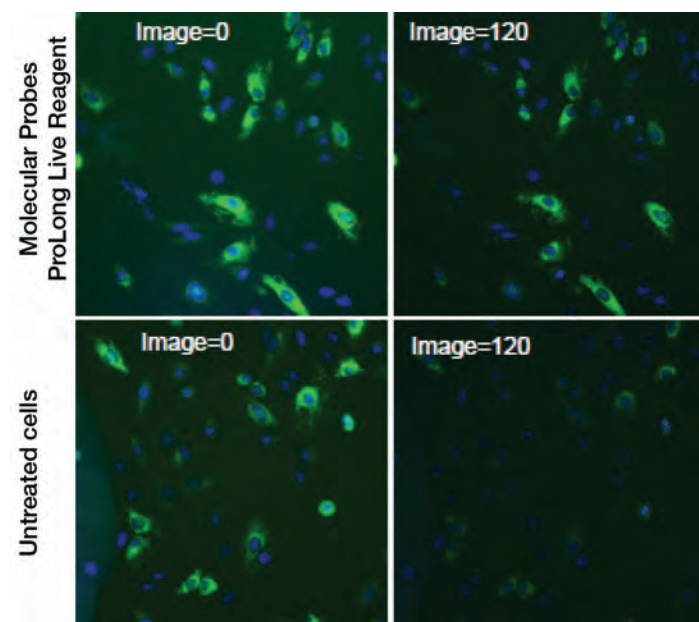
Whether you are undertaking cellular dynamic studies, conducting confocal imaging or working with low-signaling cells, the right reagent can enable the best image possible, without fear of loss of signal. Loss of fluorescent signal through irreversible photobleaching can lead to a significant reduction in sensitivity, particularly when your target molecules are of low abundance or when you use high-intensity excitation or long imaging times. Minimize photobleaching, increase the photostability of many popular fluorophores and preserve signals for higher sensitivity and extended analysis with the new Molecular Probes ProLong Live Antifade Reagent.

Product highlights:

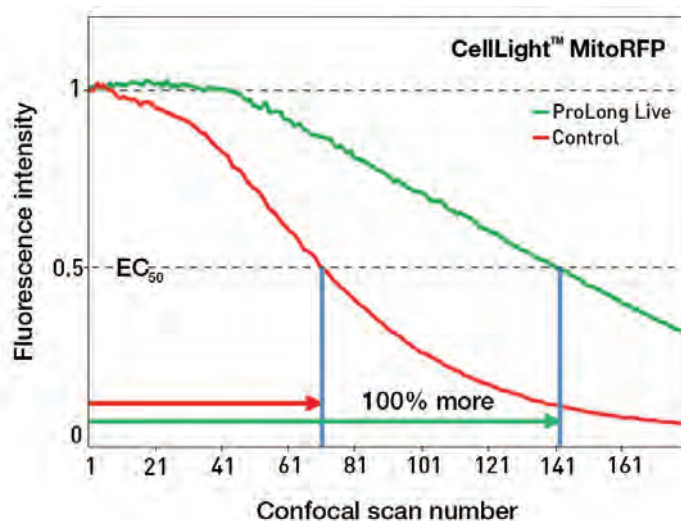
- Inhibits photobleaching in live cells
- Compatible with fluorescent dyes and proteins
- Extends imaging times in time-lapse experiments
- Ready-to-use 100X formulation



ProLong Live reagent used as an antifade reagent for Molecular Probes™ CellLight™ Talin-GFP, CellLight™ Golgi-RFP, MitoTracker™ Deep Red (purple) and NucBlue™ Live (Blue) in U2OS cells.



After 120 exposures using a standard time-lapse imaging protocol, samples treated with ProLong Live reagent are >20% brighter than untreated cells, enabling more data collection time.



The overall signal protection offered by ProLong Live reagent compared to untreated samples is calculated based on the scan number where treated and untreated samples reach the EC₅₀ value. The addition of ProLong Live reagent permitted 100% more captures with CellLight™ MitoRFP (TagRFP).

Find out more at thermofisher.com/antifades

For Research Use Only. Not for use in diagnostic procedures. © 2015 Thermo Fisher Scientific Inc. All rights reserved. All trademarks are the property of Thermo Fisher Scientific and its subsidiaries unless otherwise specified. CO015843 0615